

Dr. Mahendrakumar S. Shinde  
I/C PRINCIPAL



Mobile No. 9422560027  
Email - principalnutan@rediffmail.com

## “Report on the Visit to Mahur Forest”

**Date:** September 21, 2022

**Place:** Mahur Forest

**Students Participants:** 29 B.Sc.,

**Faculty Participants:** 3 Faculty Members

### **Introduction:**

On September 21, 2022, a group consisting of 32 B.Sc. students embarked on a visit to the Mahur Forest. The purpose of the visit was to provide students with first-hand experience of biodiversity, forest ecology, and conservation efforts in a natural habitat.

### **Activities:**

- **Welcome and Orientation:**

Upon arrival at the Mahur Forest, the group was welcomed by forest officials and briefed about the significance of the forest, its flora, fauna, and conservation efforts.

- **Guided Nature Walk:**

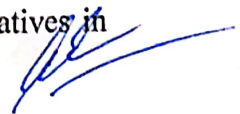
A guided nature walk was conducted through designated trails in the forest. Students observed various plant species, including indigenous trees, shrubs, and medicinal herbs, while learning about their ecological importance and conservation status.

- **Wildlife Observation:**

Students had the opportunity to observe wildlife in their natural habitat, including birds, mammals, reptiles, and insects. Forest officials provided insights into the behaviour, adaptations, and conservation challenges faced by the wildlife species found in the forest.

- **Discussion on Forest Conservation:**

A discussion session was held to highlight the importance of forest conservation, sustainable resource management, and community involvement in protecting natural ecosystems. Students learned about the threats facing forests and the role of conservation initiatives in mitigating these threats.

  
PRINCIPAL  
Nutan Mahavidyalaya  
SELU, Dist. Parbhani



## Aims and Objectives of the Excursion Tour to Mahur Forest



### Aims:

- **First-Hand Experience:** To provide students with a first-hand experience of the diverse plant life found in Mahur Forest, enhancing their understanding of forest ecology and biodiversity.
- **Supplementation of Theoretical Knowledge:** To supplement the theoretical knowledge gained in classrooms with practical exposure to plant species, ecosystems, and conservation efforts in a natural habitat.

### Objectives:

- **Exploration of Plant Diversity:** To organize guided nature walks and botanical excursions in Mahur Forest, allowing students to observe, identify, and study various plant species, including trees, shrubs, herbs, and epiphytes.
- **Observation of Ecological Interactions:** To enable students to observe ecological interactions between plants, animals, and microorganisms in the forest ecosystem, learning about mutualistic relationships, competition, and adaptations to environmental conditions.
- **Identification of Endangered Species:** To identify and document endangered and endemic plant species in Mahur Forest, raising awareness about the importance of conservation and habitat protection for preserving biodiversity.
- **Discussion on Forest Ecology:** To facilitate discussions and interactive sessions on forest ecology, ecosystem services, and the role of forests in mitigating climate change, soil erosion, and water regulation.
- **Introduction to Conservation Practices:** To introduce students to conservation practices and management strategies implemented in Mahur Forest, including habitat restoration, invasive species control, and community-based conservation initiatives.
- **Integration of Classroom Learning:** To integrate the knowledge and concepts learned in botany classrooms with real-world observations and experiences in the field of forest ecology and biodiversity conservation, reinforcing students' understanding of ecological principles and conservation issues.

Overall, the excursion tour aims to provide students with a holistic learning experience that combines theoretical knowledge with practical exposure to plant diversity and forest ecosystems. It seeks to inspire students to appreciate the value of natural habitats, advocate for biodiversity conservation, and contribute to sustainable environmental stewardship.

### Conclusion:

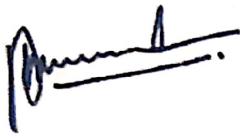
The excursion tour organized by the Department of Botany, Nutan Mahavidyalaya, Selu, to Mahur Forest on September 21, 2022, has successfully achieved its aims and objectives of providing students with a first-hand experience of plant diversity, forest ecology, and conservation efforts in a natural habitat. Through guided nature walks, botanical excursions, and interactive discussions, students were able to immerse themselves in the rich biodiversity of Mahur Forest. They gained valuable insights into the ecological interactions between plants, animals, and microorganisms, as well as the importance of conservation practices for preserving biodiversity. The excursion not only supplemented the theoretical knowledge gained in classrooms but also fostered a deeper appreciation for the value of natural habitats.

PRINCIPAL

Nutan Mahavidyalaya  
SELU, Dist. Parbhani



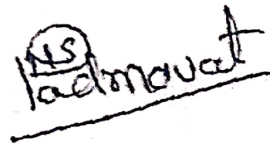
and ecosystems. Students were inspired to advocate for biodiversity conservation and sustainable environmental stewardship, contributing to their academic and personal growth as future stewards of the environment. The Department of Botany extends gratitude to the forest officials and authorities for their hospitality and support during the visit. The excursion has provided students with a memorable and enlightening experience that will have a lasting impact on their understanding of forest ecology and conservation.



HOD

HEAD

Department of Botany  
Nutan Mahavidyalaya  
Sailu, Dis. Parbhani



Director IQAC

Director  
IQAC

Nutan Mahavidyalaya, Sailu



Principal

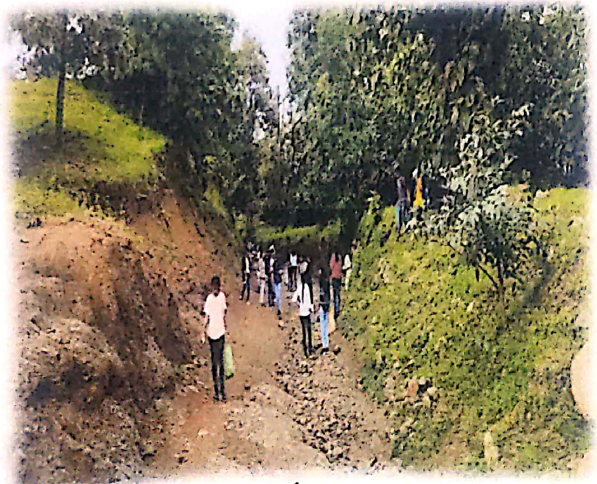
Principal  
Nutan Mahavidyalaya  
SELU, Dist. Parbhani

PRINCIPAL

Nutan Mahavidyalaya  
SELU, Dist. Parbhani



visit to mahur forest



plant Identification and collection at mahur forest

Nutan Mahavidyalaya SELU, Dist. Parbhani



Plant identification and collection at mahur forest.

  
PRINCIPAL  
Nutan Mahavidyalaya  
SELU, Dist. Parbhani

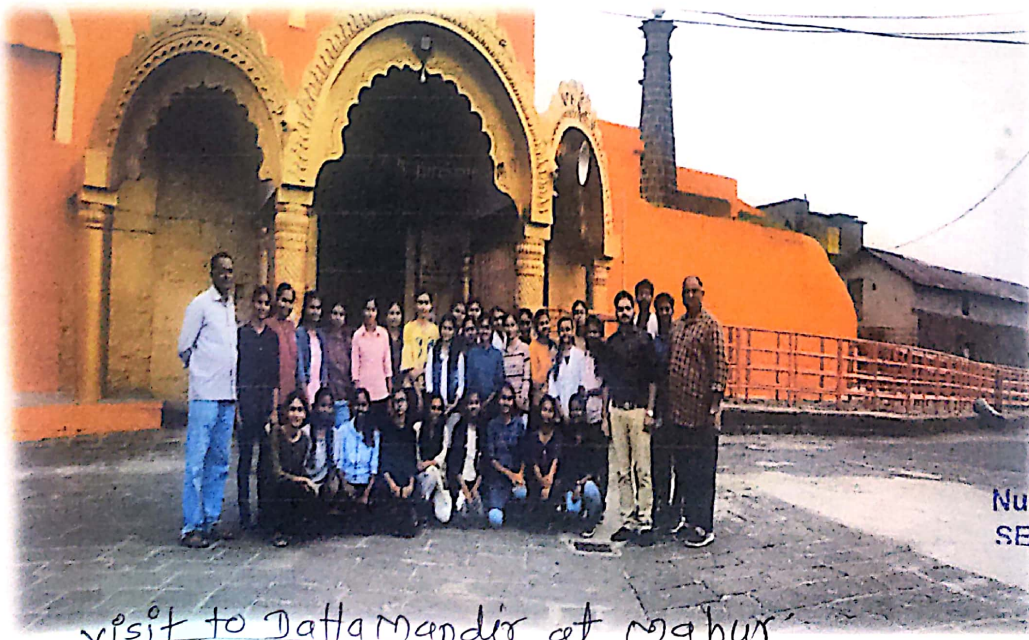


Visit to Renuka Mandir at Mahur



Latitude: 19.825113  
Longitude: 77.930765  
Elevation: 590.9±16 m  
Accuracy: 12.6 m

Visit to Mahur, Forest



visit to Datta Mandir at Mahur

PRINCIPAL  
Nutan Mahavidyalaya  
SELU, Dist. Parbhani



preservation of plants in mahur forest



  
PRINCIPAL  
Nutan Mahavidyalaya  
Selu, Dist. Parbhani